

Community Safety Forum, 8<sup>th</sup> March 2010

## **Crime trends and performance in Brighton & Hove**

This report describes crime trends up to January 2010 and reports against key crime targets relating to the Community Safety, Crime Reduction and Drugs Strategy, 2008-11.

### **Total Police Recorded Crime**

Since April 2009 there has been a reduction in overall crime of 4% compared to the same period last year and this exceeds our 3% reduction target. This is a continuation of the long term downward trend experienced in the past ten years.

### **Criminal Damage**

December and January have shown particularly low levels of recorded criminal damage and after 10 months of 2009/10 the 5% target is now being met. However, within this overall criminal damage crime group there are different sub-trends; criminal damage against dwellings and other buildings are showing a decrease while damage against vehicles is showing an increase. One component of criminal damage is graffiti which is showing year on year improvements based on street survey measures. Examples of work to tackle graffiti include the adopt-a-box scheme which has been widely supported and the removal of graffiti in high locations by CityClean. Four successful prosecutions for graffiti were achieved during 2009 and two further cases are scheduled for the crown court in April.

### **Violent Crime**

The number violent offences involving injury (including both serious and other injury) have reduced by 3.7%, which is better than the 3% reduction target. The number of offences during December and January were at their lowest since at least 2006 and the overall annual trend is downwards. Initiatives aimed at tackling hazardous drinking have taken place recently, including leaflet and poster campaigns targeted at young people. The Alcohol Brief Interventions Service has delivered over 900 interventions during its first quarter of operation. Contacts made through this scheme are expected to increase through extending work to include the Community Health Bus, Safe Space and GP surgeries.

### **Sexual Offences**

There have been 273 sexual offences recorded up to the end of January, slightly fewer than the same months of 2008/9. Work is continuing to further develop local support services for victims of sexual assault, which link in with the Sussex-wide Sexual Assault Referral Centre. Services for victims of sexual violence and abuse in the city are to be examined via the council's Environment and Community Safety Overview and Scrutiny Committee during 2010.

### **Domestic Burglary**

During the first half of 2009/10, numbers of domestic burglaries were relatively high and showing an 8% increase compared with last year. However, since then there has been a drop and up to the end of January the number is only slightly higher (up by 1.2%) compared with 2008/9. There is ongoing work around improving security of vulnerable properties and the provision of targeted crime reduction advice. Also, partnership work through the Priority and other Prolific Offender programme, and through Operation Reduction, which combines enforcement action with support into treatment for drug users, helps to reduce the motivation to carry out acquisitive crimes.

## **Motor Vehicle and Cycle Theft**

Between April and January there have been roughly the same number of motor vehicle thefts as in the same months last year. Thefts from motor vehicles (TFMV) are more numerous than thefts of motor vehicles (TOMV) (accounting for 66% of all vehicle crime), but (as in the previous report) TFMV are continuing to show a decreasing trend (down by 9%) whereas TOMV are showing a rising trend (up by 27%). There has been a particular increase in the number of two-wheeled motor vehicles stolen which has been impacted on this figure. There have been police initiatives in relation to vehicle crime, including the successful deployment of a trap scooter, and other high profile operations in city centre car parks.

Police recorded cycle thefts have reduced by 9% compared with last year. Work is being progressed towards the installation of further cycle parking stands in cycle theft hotspot areas. A controlled study into how to work with local communities to maximise the effectiveness of these new stands is accompanying this project so as to inform the way in which further cycle parking provision can be introduced most effectively.

## **Domestic Violence and Hate Crimes and Incidents**

The number of domestic violence incidents reported to the police is 8% higher than last year. While seeking to decrease the incidence of DV, there is also ongoing work to increase reporting. The Independent Domestic Violence Advisor (IDVA) service moved towards being located at the police station. As a result there has been improved communication and co-ordination of work with investigating police officers resulting in swifter responses and improved support to victims.

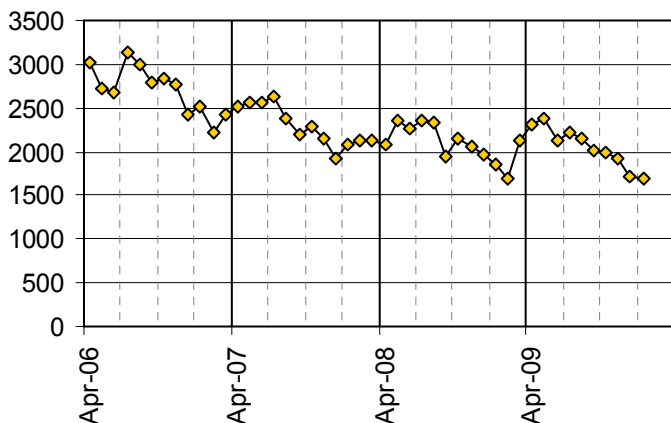
The number of racist and religiously motivated incidents (RRMI) recorded by the police continues to decline, although the number recorded through the multi-agency Racist Incident Report Form remains stable. In response to the matter being identified as a community priority, racist bullying in schools and young people settings will be discussed through the relaunched anti-bullying working group.

Police recorded LGBT-motivated hate crimes and incidents also continue to fall. In addition to 3rd party reporting which was introduced to boost reporting of LGBT hate incidents, a common reporting form is also in the process of being developed.

The development of reporting mechanisms, to include a common reporting form, for disability motivated crimes and incidents is being progressed.

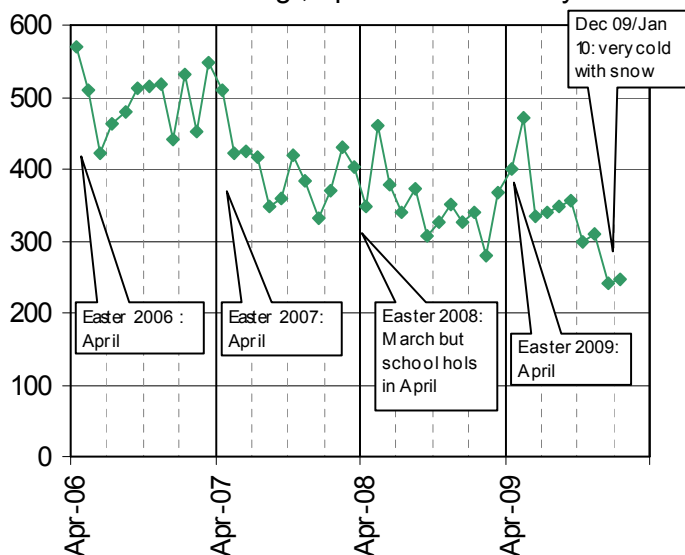
# Crime trends up to January 2010

Total Crimes, April 2006 to January 2010



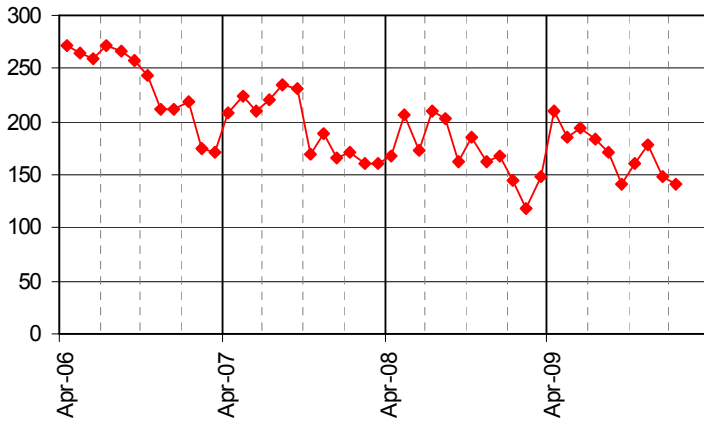
- The typical seasonal pattern in crime levels has continued with lower levels over the winter months. Numbers in December and January have been particularly low.

Criminal Damage, April 2006 to January 2010



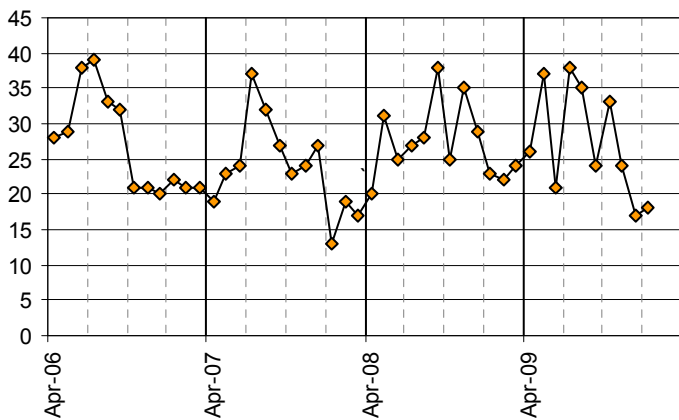
- The performance year began with a steep increase in the number of criminal damage offences, rising to a peak of about 470 in May (linked to the inputting of 60 graffiti offences in that month). Since then there has been a downward trend with December and January being at the lowest monthly levels for some years.

All Injury Violence  
April 2006 to January 2010



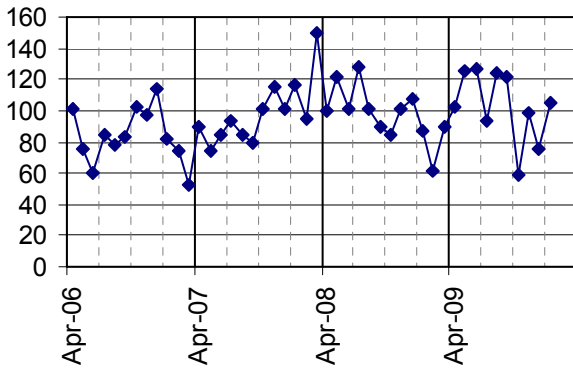
- Counter to the seasonal expectations, numbers police recorded violent crimes involving injury rose in November, although they dropped again in the subsequent two months.

Sexual Offences  
April 2006 - January 2010



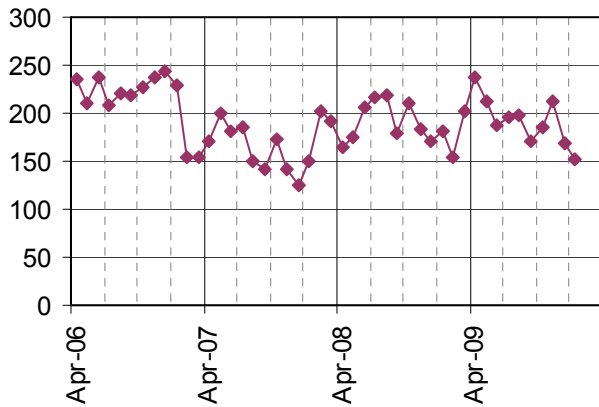
- There have been recent developments in services which are aimed at increasing reporting and support to victims. Between Apr and Oct 2009 numbers recorded were 11% higher than in the same months in 2008. However numbers reported in the last two months, along with other crime types have dropped.

Domestic Burglary, April 2006 to January 2010



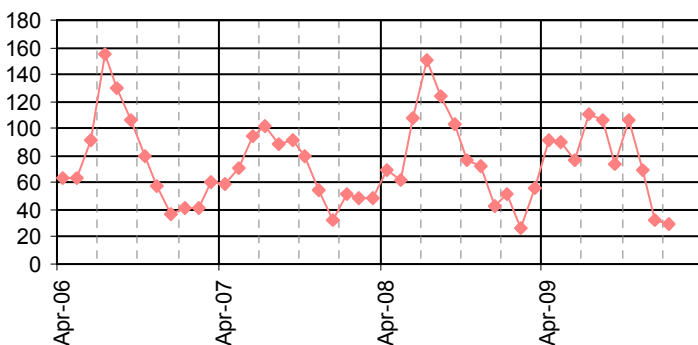
- The number of domestic burglaries has fluctuated significantly during the last year between about 60 to over 120 per month.

Vehicle Crime, April 2006 to January 2010



- Since a peak in April, the number of vehicles crimes has broadly shown a declining trend. The number of vehicle crimes Apr 09 to Jan 10 is roughly similar to the number in the same period during previous financial last year. When examined separately, theft from vehicles is showing a 9% drop while thefts of vehicles (a smaller number than thefts from) is showing a 27% increase.

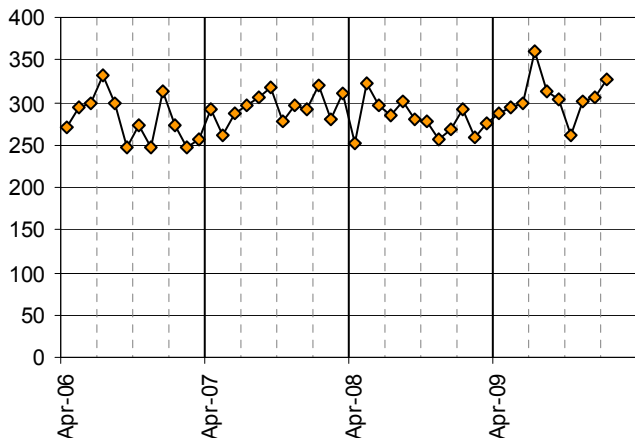
Theft of a Pedal Cycle, April 2006 to January 2010



- Pedal cycle theft shows a strong seasonal effect related to the months when more people cycle. In particular, numbers of thefts were very low during Dec and Jan, most likely to be influenced by reduced levels of cycling during to the cold/icy weather.

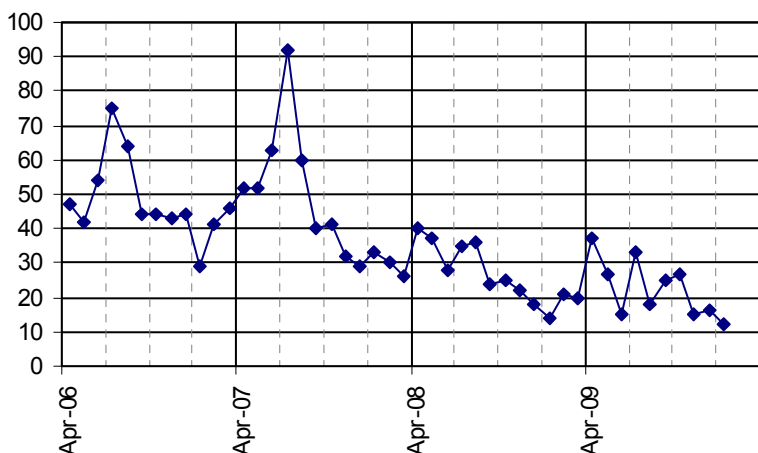
Police crime data presented in this report only reflect those crimes which are reported and recorded. There is likely to be a level of underreporting in many crime types. However, domestic violence and the hate crimes on this page are likely to be particularly liable to underreporting.

Domestic Violence Crimes and Incidents, April 2006 - January 2010



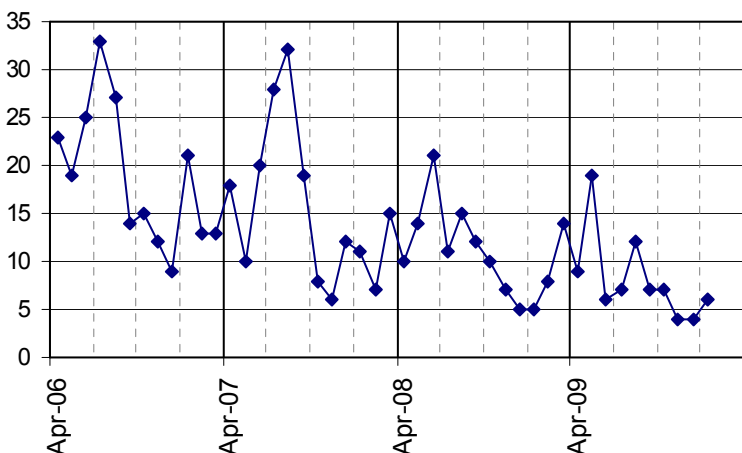
- Although the months of Jul and Oct were exceptions the general trend in the number of police recorded domestic violence crimes and incidents was upwards.

Racist and Religiously Motivated Crimes and Incidents, April 2006 to January 2010



- The declining trend in racist and religiously motivated crimes and incidents appears to be continuing. Although over the last year numbers have shown some variability, the seasonal effect (more incidents in the summer months) still appears to be present. Numbers recorded in January are at their lowest level since Apr 2006.

LGBT Hate Crimes and Incidents, April 2006 to January 2010



- Although there are normally higher levels of homophobic, biphobic and transphobic incidents during the summer months, this has been less evident this year with particularly low levels in June and July. The declining long term trend appears to be continuing with only 4 cases recorded during the months of Nov and Dec.

## Performance data for Key Crime Types, 2009/10 (to end January)

<b>Police recorded crimes, April to January 2010 (inclusive)</b>	number of crimes Apr 08-Jan 09	number of crimes Apr 09-Jan 10	reduction target (from 2008/09 baseline)	performance against target to date	rank within 15 benchmarked CDRPs <sup>1</sup> (1=best; 15=worst)
Total Crimes	21,374	20,519	-3%	<b>on target</b>	5
Criminal Damage	3,544	3,342	-5%	<b>on target</b>	10
Injury Violence	1782	1716	-3%	<b>on target</b>	6 <sup>2</sup>
Sexual Offences	281	273	no target	-	
Domestic Burglary	1,019	1,031	-3%	<b>not on target</b>	2
Theft from/of a Motor Vehicle	1,907	1,916	-3%	<b>not on target</b>	4
Pedal Cycle Theft	860	785	no target	-	6
Domestic Violence Crimes and Incidents	2,827	3,051	no target	-	
Racist/Rel. Crimes and Incidents	291	239	no target	-	
LGBT Hate Crimes and Incidents	110	81	no target	-	

<sup>1</sup> See Appendix for further information around the benchmarking arrangements

<sup>2</sup> iQuanta category 'wounding (serious and other)'  
Community Safety Forum, 8<sup>th</sup> March 2010

## **Appendix.**

### **A note on how Brighton & Hove's performance is compared with other CDRPs.**

For the purposes of assessing the relative performance of Brighton & Hove CDRP (Crime and Disorder Reduction Partnership) in reducing crime, our performance is compared (benchmarked) with the performance of 14 other 'Most Similar' CDRPs. The Home Office have created these groupings to help provide information on how CDRPs, police forces, etc. are performing.

CDRPs within a 'Most Similar' grouping have been assessed as having similar characteristics in terms of 24 socio-demographic and geographic variables which are strongly linked to increased levels of crime, fear of crime, or incidents.

We are able to compare our crime trends and current performance with our Most Similar CDRPs. The data presented on page 1 of this report (see right-most column of the table) shows our ranked position within this group of 15 CDRPs. For example, a ranking of 1 indicates that a CDRP is performing best within the group, and a ranking of 8 shows that the CDRP is in the middle ranked position.

### **Other Members of Brighton & Hove's Most Similar CDRP Group (from Apr 2008) area as follows:**

LB Barnet  
Bournemouth  
Cheltenham  
LB Croydon  
LB Ealing  
Eastbourne  
LB Hackney  
LB Hammersmith & Fulham  
LB Kensington & Chelsea  
LB Lambeth  
Reading  
LB Southwark  
LB Wandsworth  
Wycombe